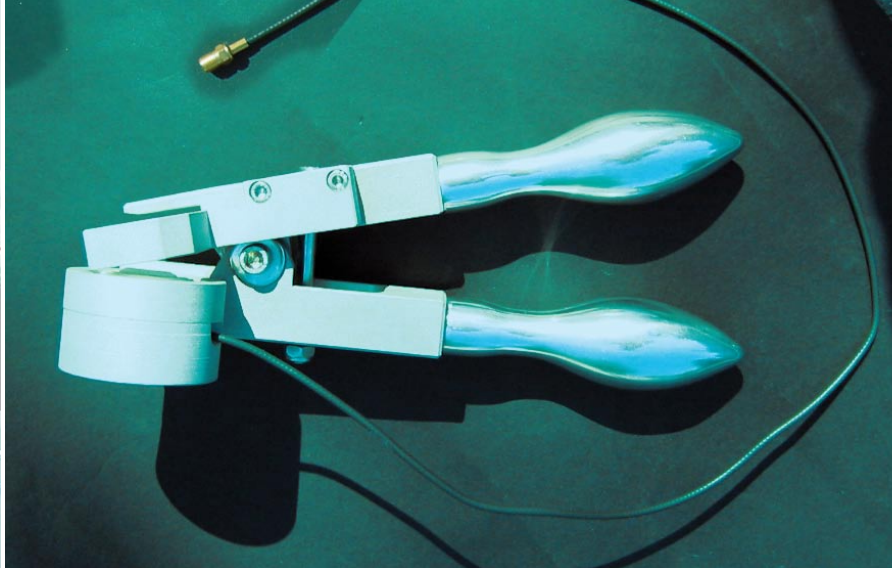
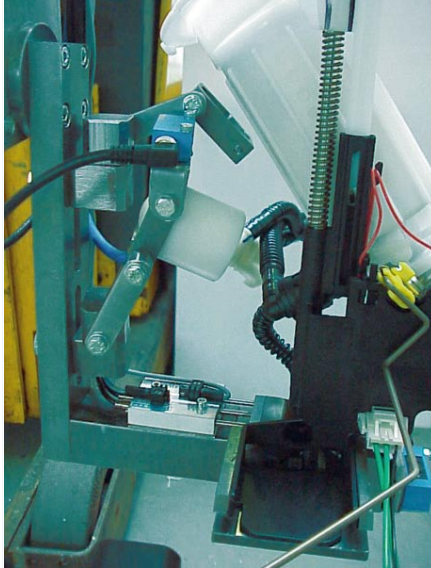


Click Detector for Quick Connectors

Type: CDQC



Background

Quick connectors (QC) are commonly used for many connections around the fuel system in cars. In particular there are a few such connections around the fuel tank.

In fuel tank assembly lines the fuel lines are connected to some nipples of the tank by such Quick Connectors. Doing this 8 h/day under time pressure the operator is unable to check whether each QC is assembled correctly. Therefore it happens in some cases that a QC is not really locked.

Solution

To assist the operator in the assembly procedure **MACEAS** has developed a **QC testing device called Click Detector (CD)**. The CD detects the typical click sound produced when the QC is mounted correctly.

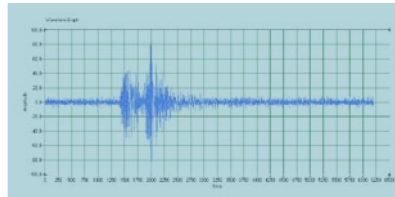


Your advantage

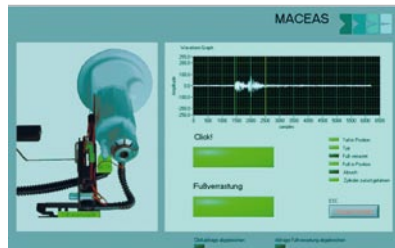
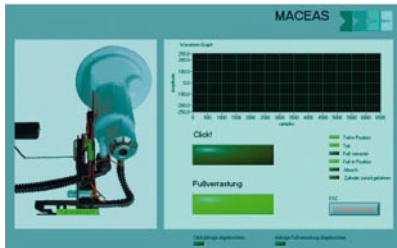
- Monitoring of click sound for correct assembly of Quick Connectors
- No direct contact with the QC
- Documentation of result (OK / NOK) with barcode of component(s)

Click Detector for Quick Connectors

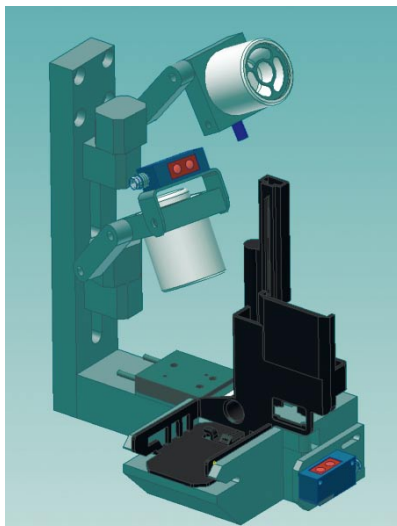
Click sound in time domain



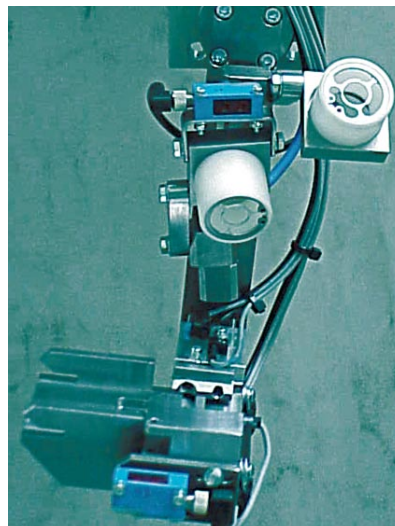
Visualisation of test results



Design example



Example for CD-device



Appropriate to

Various Quick Connectors if accessible
by free sound path between QC and
CD.

MACEAS GmbH
Königstrasse 2
26676 Harkebrügge
Germany

Contact person:
Dipl.-Physiker Jürgen Steck
Fon +49 (4497) 92190-17
Fax +49 (4497) 92190-19
Mobil +49 (172) 6823421
steck@maceas.com